



Pre-Game DOs

Mound / Batters Box Area

- Scrape out depressed area to properly clean
- Dampen the area with water
- Insert mound clay into depression and tamp clay down – full compaction
- Place infield mix on top of mound/batters box
- Cover these areas prior to game time

Dragging the Field

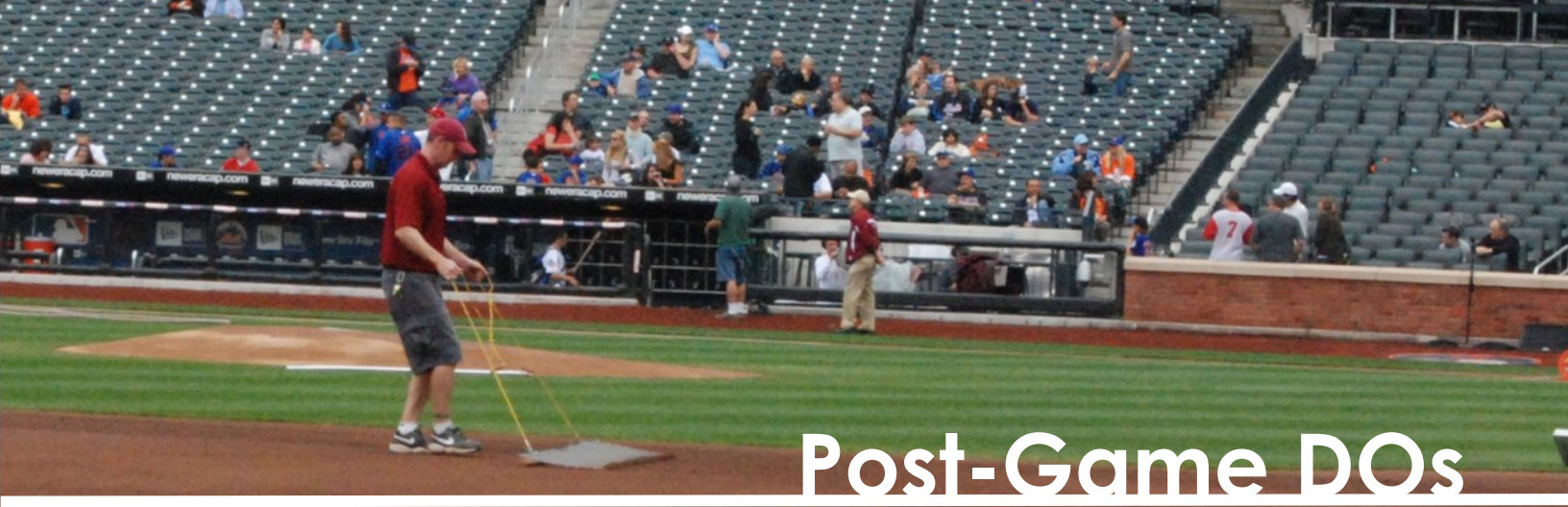
- Pull in direction of base paths: never drag towards a grass edge
- Vary the method
- Screen drag a dry field
- Spike drag a damp field

Water Removal

- Utilize a method that will not remove infield mix (i.e. pillows)
- Remove standing water
- Hand rake areas to open up damp areas
- Sun and wind are your best friends
- Drying agent only to be used in high traffic areas. RULE: If you need more than 4 bags – cancel the game!

Grass Cutting

- Depending on season, grass fields should be cut to a standard height twice a week
- Plan ahead to avoid grass cutting after rain
- Avoid cutting grass shorter than 1 ½" at any time
- Never cut more than 1/3 of the top growth off of the grass at any time
- Cutting grass in high temperatures will burn it



Post-Game DOs

Leveling

- Rake and fill in low spots at:
 - ⇒ Home plate and batter's box
 - ⇒ Pitcher's mound
 - ⇒ Around all bases
- Remove and plug all bases
- Use rakes to smooth areas around bases

Infield Conditioner

- Use for preventative maintenance
- Review weather conditions – needs to be dry for 48 hours
- Evenly spread conditioning agent on skinned portion of infield
- Screen drag product into field
- Conditioner works by embedding into the soil, allowing the infield to absorb more water and react quickly to wet conditions



Maintenance DON'Ts

- Do not sweep or rake mud from infield onto grass – remove and break all brooms near your turf!
- Do not drive a truck/tractor on the field after heavy rain
- Do not leave chalk in baseliner that can get damp
- Do not drag the infield from inside the pitchers mound to the outside – this will create a lip on your field
- Do not drag the field without removing bases
- Do not rake across baselines – rake lengthwise to properly drain the infield
- Do not dump bags of drying agents on the field in an attempt to play a game
- Do not allow people on the field unrestricted
- Do not apply clay without first cleaning the affected area
- Do not cut grass immediately after a rain